

Approyo

What's New in SAP Monitoring?



"Certain areas of your SAP landscape need to be monitored on a regular basis to ensure reliable operation."

— SAP Administration: Practical Guide, p. 269 Galileo Press, 2011.

Monitoring SAP is not a simple proposition. There are no "free" solutions, as is sometimes the claim. The TCO to setup and maintain monitoring of SAP systems is heavy. Still, SAP requires that it be done to ensure proper functionality.

The dirty secret is, that often, the SAP system is not being monitored and if it is, it is not being done adequately. But what if there was an inexpensive, agent-less, reliable tool to help carry the load?

The **1st Watch system** was developed for Basis Administrators to fulfill the daily requirement to monitor and maintain the SAP

landscape. It was designed to do this in a proactive way because we'd rather prevent problems than simply report that they happened, after the fact.



1st Watch Features:

✓ Alert Validation

- As-a-User Testing
- Alert Analysis
- Alert Persistence/Resolution

✓ Simple Setup

- No Agents to install
- Pre-Set Thresholds
- Phone-home Connection

✓ Easily Scalable

- SAProuter Access (typical)
- Internal Node
 - (larger landscapes)

✓ Secure Communication

- TLS Tunnel
- Point-to-Point SSL
- SAProuter Connection (SNC)

✓ Centralized Data Collection

- Centralized Administration
- Real-Time Performance
- Parameter History Analysis

✓ Robust Escalation

- SMS & Email Alerts
- Round-Robin Escalation
- Customer Contact Tree

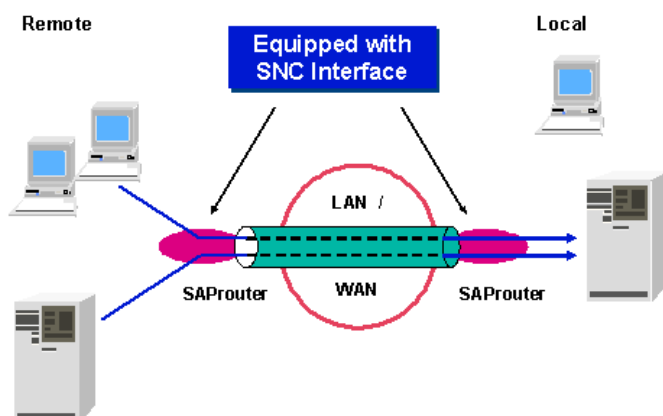
Under the Hood

The 1st Watch system communicates with the customer's SAP systems over a standard SAP connection called SAProuter which is configured as a Secure Network Communication (SNC) between SAProuters, creating a secure point-to-point connection. This allows the system to collect SAP-specific data from certain transactions, related to Basis Monitoring.

To add Operating System (OS) and Database (DB) monitoring, a collector is installed with a "phone-home" (outbound) connection over a Transport Layer Security (TLS) socket. The 1st Watch Collector enables the system to monitor OS, DB, Java systems and portals within the customer's SAP landscape. Historical and performance data are then available for analysis or reporting.

Critical Checks Performed:

- Availability (SM51)
- Database Backups (DB12)
- SAP Jobs (SM37)
- System Log Errors (SM21)
- ABAP Dumps (ST22)
- Table Locks (SM12)
- Database Errors (SM13)
- Database Space Usage (DB02)
- SAP Buffers (ST02)
- Work Processes (SM50)
- More...



*image source: help.sap.com (Configure SNC)

13100 West Lisbon Rd, Suite 500
Brookfield, WI 53005